

Return To School Update

North Haledon School District

Board of Education Meeting

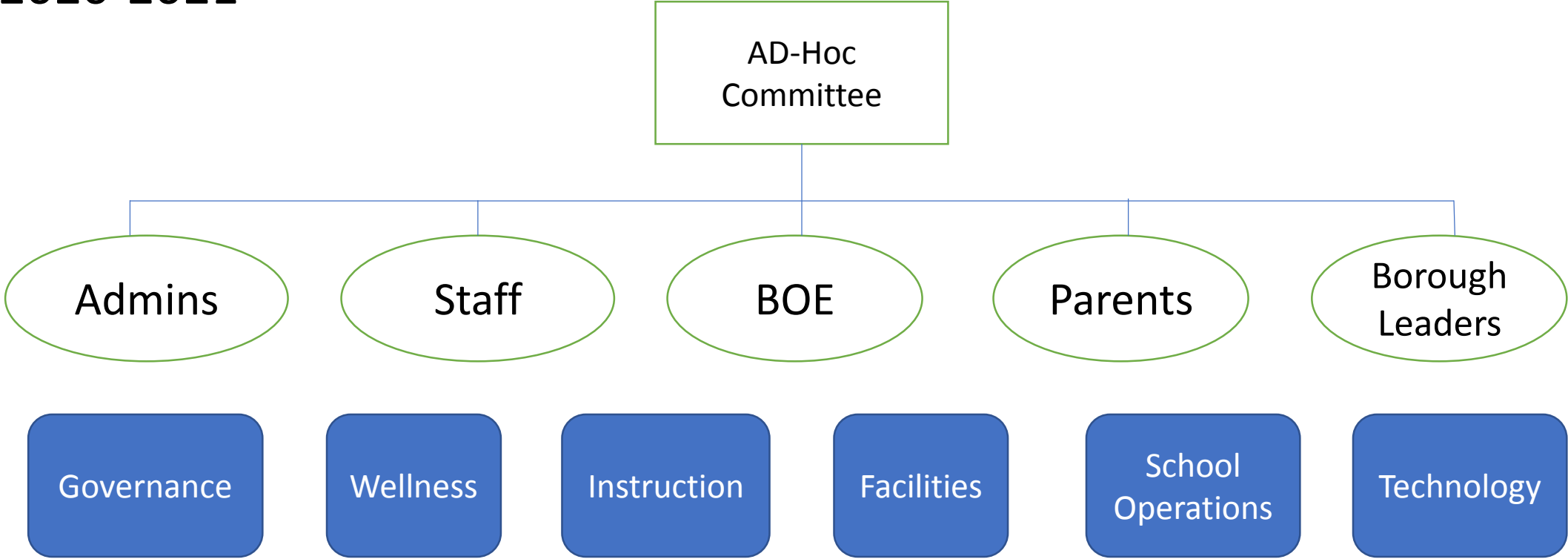
August 12, 2020

District Mission

Provide for the health and safety of all staff and students for the return to the North Haledon Schools.

Return to School Planning Structure

2020-2021



Guidance for the Re-Opening of Schools

NJ DOE: THE ROAD BACK... RESTART AND RECOVERY PLAN FOR EDUCATION

- States “that absent a shift in public health data, school buildings will open in some capacity for in-person instruction and operations in the fall.”
- This guidance leaves flexibility for interpretation on how schools are required to operate when they re-open.
- CDC recommendation is to keep communities safe while resuming peer to peer learning.
- AAP strongly advocates that all policy considerations for the upcoming school year should start with a goal of having students physically present in school.

Guiding Principles

1. Communications:

- Provide regular communications to the community with updates and changes regarding health concerns and school schedules.

2. Health and Safety:

- Provide a safe learning environment for our students, faculty, and staff.
- Emphasize the importance of addressing the Social-Emotional well-being of our students, faculty, and staff.

Guiding Principles (cont.)

3. Instruction:

- Prepare and provide instruction in school, through virtual instruction and/or blended learning approach.
- Meet the instructional goals of our curriculum while maintaining the flexibility to adjust as needed.

4. Access to Learning:

- Provide an equitable learning environment for all students.
- Provide for the unique needs of our special education students.
- Consider health concerns of our community.

School Schedule...Phase ONE

- ✓ Both Memorial and High Mountain Schools will operate on a single-session schedule... Memorial School (8:35 to 12:59) and High Mountain School (8:30-12:49).
- ✓ PM session will include virtual instruction for ALL students.
- ✓ Students will be split into two groups... GREEN & YELLOW (siblings will be grouped together).
- ✓ Hybrid learning model will be implemented as one group will be present in school while the other group will be home (remote learning).
- ✓ Groups will alternate weeks with regard to in-school instruction.
- ✓ Remote learning for all students will occur every Friday.
- ✓ PreK Disability Program will report daily (except Virtual Fridays) with AM group from 8:30 to 10:00, and PM group from 11:00 to 12:30.
- ✓ All ELL, Self-contained, LLD, and Out-of-Class Replacement students will report daily except on Virtual Fridays.

Phase ONE Safeguards

- Cafeteria will be utilized for small group instruction (as needed). No seating for lunch will occur during this phase.
- Snack time only for K-2.
- Special Subjects will remain in classroom, except for Physical Education.
- No Art supplies or PE equipment will be utilized.
- Instrumental and Chorus will only occur in virtual manner.
- Masks/Face Coverings are required unless medical documentation prohibits usage.
- Signage will be visible to all students & staff throughout the building.
- Front and Rear doors of each school will be utilized for arrival & dismissal.
- Temperature screening will occur prior to entry.
- Isolation Room in both schools will be available on as needed basis.

Other Health Measures & Guidelines

CLEANING

- Both buildings will undergo a thorough cleaning daily.

VISITORS

- Limited to no access.

SOCIAL/PHYSICAL DISTANCING

- Everywhere... outside of school, hallways, stairwells, classrooms.

HANDWASHING

- Time will be provided during course of the day.

DAILY SCREENINGS

- Handling of symptoms, and contact tracing are in development.

How can you help?

- ✓ Mask readiness is important.
- ✓ Communicate with our nursing staff as to any potential signs & symptoms of illness or sickness.
- ✓ Do your best to keep your child at home if experiencing a fever or other symptoms (common cold included).
- ✓ Remember, traveling to other states and countries that have a high number of COVID cases not only puts you and your family at-risk, but your return to school can possible place others at-risk as well.
- ✓ Discuss with your child as to appropriate behavior whether in school or via remote learning.
- ✓ If contact is made by our nurse to home with regard to any illness or sickness, do your best to arrive in a timely manner. Our isolation rooms will house those who are experiencing symptoms, but picking-up your child as timely as you can is vital.

Next Steps...

- Continue our planning. Reminder... our plan is a living document. Revisions will occur based upon state mandates and directives. Nothing is final.
- We are officially a 1:1 district. We are in the process of prepping all of our Chromebooks and Laptops.
- School Principals will be sending information home with regard to groupings, teacher assignment, and other vital information necessary for a seamless start to the school year.
- Professional Development for our staff is on-going whether in-person or virtual manner.
- We continue our collaboration with our local health department, as well as following updates as to CDC guidelines.
- The sanitizing and disinfecting of our school buildings is top priority. Our staff will continue to effectively prep for the start of a new day for all.